

FRONT (may vary with options)



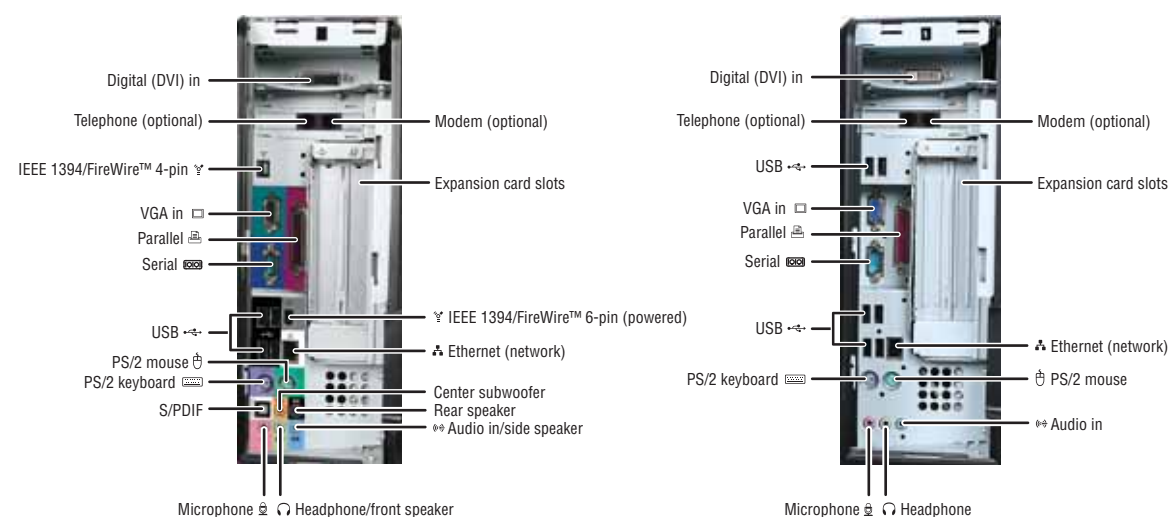
BACK (may vary with options)



RIGHT



PORTS (behind side port cover)



Your Gateway computer is packed with many powerful features. Icons and color coding help make setting up your computer as easy as possible.

1 Remove the side port cover

Grasp the port door on the right side of the computer and pull up, then toward you.



2 Connect the mouse

If you have a wireless mouse, follow the instructions that came with it. If you have a USB mouse, connect it to one of the USB ports.



3 Connect the keyboard

If you have a wireless keyboard, follow the instructions that came with it. If you have a USB keyboard, connect it to one of the USB ports.



4 Connect the modem (optional)

Connect the modem cable to the modem jack and the telephone wall jack. You can connect your telephone to the phone jack.



5 Connect the network (optional)

Connect the network (RJ45) cable to the Ethernet jack and a cable modem, DSL modem, or network jack. NOTE: For detailed network and Internet setup instructions, see your online User Guide.



6 Replace the side port cover

Slide the port cover back into place.



7 Connect the power cord

Connect the power cable to the computer, then plug it into a power supply. To protect your system from power fluctuations, use a surge protector.

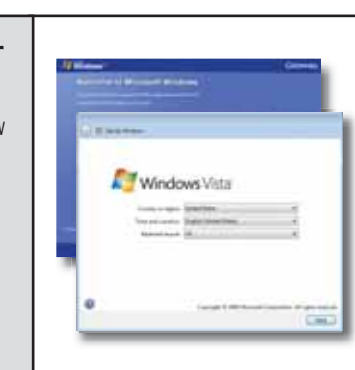
WARNING: To protect your computer during electrical storms, unplug the power cord and network and phone cables.



8 Turn on the power (⏻)

Turn on the computer and follow the Windows setup screen instructions.

IMPORTANT: Connect devices, such as printers or scanners, after you complete the Windows setup. Follow the instructions that came with the device.



FOR EXTRA HELP...

SEE YOUR ONLINE DOCUMENTATION. For detailed information about using your Gateway computer, see your User Guide that has been included on your hard drive. To access the User Guide, click (Start), **All Programs**, then click **Gateway Documentation**.

CHECK ONLINE SUPPORT. For help and information about common issues, visit the Support Web site at www.mpccorp.com/support.



SERIAL NUMBER AND CONTACT INFORMATION LABEL

Customer Care telephone numbers vary by country or region.

Help resources and Customer Care information



MAN PFL6/6.5 SETUP PSTR R1 1/08

