

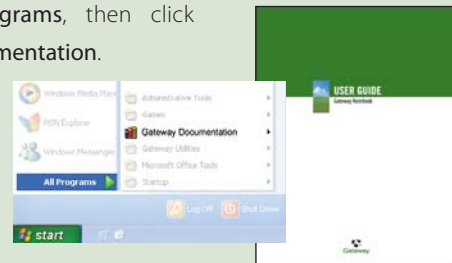


SETTING UP

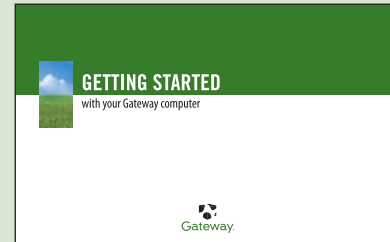
Thank you for your purchase.



SEE YOUR ONLINE DOCUMENTATION. For detailed information about using your Gateway notebook see your *User Guide* that has been included on your hard drive. To access the *User Guide*, click **Start, All Programs**, then click **Gateway Documentation**.



SEE YOUR GETTING STARTED GUIDE. After setting up your computer, read the *Getting Started* guide for tips on using your notebook.



MANAGING YOUR BATTERY LIFE. To get the most out of your battery:

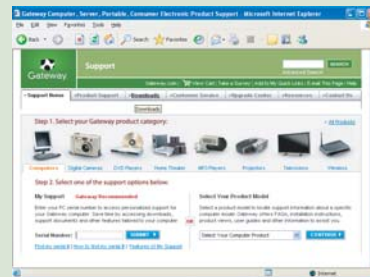
- Dim the display as low as you can comfortably see.
- Remove PC Cards when not using them.
- Modify the power management settings to reduce power use.
- Use Hibernate mode when not using your notebook.
- Use the Optical drive only when you need to.
- Travel with an extra battery and fully charge batteries before traveling.
- Use your AC power adapter whenever power is available.

For more information, see "Managing Power" in your user guide.

For Customer Care (technical support) telephone numbers, see the label on the bottom of your notebook.



CHECK GATEWAY SUPPORT. For help and information about common issues, visit our Internet Support Site at gateway.com.



WORKING SECURELY. Your Gateway notebook comes with the software you need to connect safely and securely. To ensure a high level of security, you should:

- Regularly update your antivirus software.
- Install all critical updates for Microsoft Windows (click **Start, All Programs**, then click **Windows Update** and follow the on-screen instructions).
- Use the security features provided in the Windows Security Center (click **Start, All Programs, Accessories, System Tools**, then click **Security Center**).

